

selected artworks by

Shirley Ginsberg

3Dx5 STRICTLY SCULPTURAL



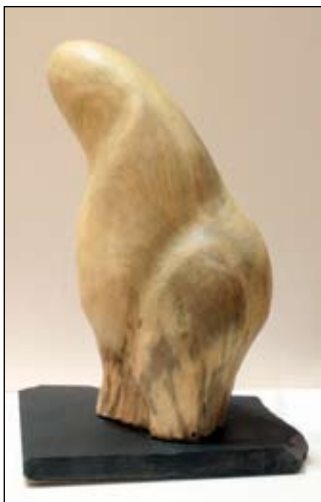
(left)
Cat No. 39
"Flamingo Resting"
talc on rock
15cmH
\$350



(left)
Cat No. 47
"An Elegant Twist"
Huon pine on perspex
38cmH
\$400



(right)
Cat No. 40
"Irregular Spiral"
talc on rock
30cmH
\$360



(left)
Cat No. 42
"Quirky-A Whimiscal Form"
Huon pine on rock
37cmH
\$450



(right)
Cat No. 44
"Crystal Gazer"
talc on slate with crystal
22cmH
\$440



Cat No. 49
"One Road Less..."
leather with bark & silk
34cmW x 67cmH
\$550

Cat No. 50
"The Wandering Line"
paperbark with leather
33cmW x 68cmH
\$550



Cat No. 51
"Tracks"
bark, silk & thread
32cmW x 69cmH
\$550



Cat No. 52
"Death of a River"
silk with bark
34cmW x 67cmH
\$550

Enquiries Welcome.

for more information, or telephone credit sales, phone 08 8377 2904