



# red house news

a newsletter of the Red House Group Inc.

Gallery M, Marion Cultural Centre, 287 Diagonal Road, Oaklands Park SA 5046

P: 8377 2904 F: 8375 6794 E: info@gallerym.net.au www.gallerym.net.au

## February 2012

From the Coordinator

Hi fellow Red House members

I hope you have had the chance to visit Gallery M to see the current exhibitions - on until 5 February. Both Margo Hanka's paintings, and Marianne Lim & Dylan Toh's photography are well worth a look.

We are coming up to a busy month all over Adelaide, with the Adelaide Fringe happening from 24 February to 18 March - so much good art to get out and see. Of course, we have two fabulous exhibitions at Gallery M, opening on the evening of 10 February. Denva Whiting's abstracts and David Warren's holograms give us two very contemporary shows that are equal to anything else in town.

On Wednesday 25 Feb I was pleased to be invited to the launch of the Adelaide Airport Brighton Jetty Classic Sculpture exhibition, on display at the Brighton Surf Lifesaving clubrooms, and the Sculpture Walk along the Esplanade at Brighton. Lots of great artworks - on display until Sunday 5 February.

I would also like to remind you all of the very successful raffle we had pre-Christmas last year, and our intention to have a bigger and better raffle this year, featuring lots of gorgeous hand crafted and other gift items. Any donations can be accepted now. We have some very generous and talented members, so please think about making a contribution to assist the fundraising efforts of your Red House Group.

Hope to see you soon - Julie

## next RHG member exhibition

**13 April - 6 May 2012**  
**'NOURISH'**

There has been an excellent response to this exhibition, but there are still places - get your entry form in ASAP to ensure your participation.

This half gallery exhibition has the theme of food - and food related activities. The exhibition period coincides with the Tasting Australia Festival, a national event 26 April - 3 May.

Entry forms were in the last mailout, or download your form at [www.gallerym.net.au](http://www.gallerym.net.au)

### Coming in July ....

**Red House Group exhibiting at Pepper Street Gallery,** 558 Magill Rd, Magill from 8-27 July 2012. This is very exciting as the group will be showing their work to a new audience. The Pepper Street team have very kindly agreed to a Sunday opening to accommodate our members better, but we in turn need to help them by having some demonstrations etc on the launch day, Sunday 8 July.

The title of the Pepper Street exhibition will be **'Connexion'**, and all hanging work will be of a uniform A3 size (including frame) or unframed canvas of the standard size of 12" x 16" (unframed).

Start thinking about your artwork now - there is **no theme** as such, so do what you do best. We also want some of you to volunteer to demonstrate techniques on Sunday 8 July. We will be able to assist with the transportation of work to and from Pepper Street.

## member update

Welcome to new Red House Group members: Teresa Birt, Fenna Petit-Rotgans, Sharon Starr, Raylene Klingler, Sandra Sharma, Kylie Awege & Noela Morgan.

*"Painting is an attempt to come to terms with life.  
There are as many solutions as there are human beings"*  
George Tooker

(from [www.arts2u.com/famous-artist-quotes](http://www.arts2u.com/famous-artist-quotes))

### Thanks, and farewell



Irene Whennan, long time Red House Group member and great supporter of arts and culture in the City of Marion, will be moving out of Adelaide soon, and is sadly unable to continue her involvement with Gallery M.

Irene has been a Red House member since 2003, serving on the Board of Management both as a Committee Member and as a Council Liaison (as an Elected Member of the City of Marion). Irene served as a Councillor from 1998 - 2010, sharing her passion for community activities, serving on a number of committees, and volunteering a huge amount of time to local groups.

We are very appreciative of Irene's contribution to many activities here at Gallery M, which have included editing the Red House Group newsletter, and helping to organise the Red House Interactive Art & Craft Market in October last year. She has always been extremely generous with her time, and has made many valuable contributions whenever we call for items to raise funds for various activities.

"I have enjoyed my association with the Red House Group" Irene says, "especially my time on the Board as firstly Council rep, then Council Liaison and finally a private member and I wish everyone continued success."

We wish Irene well on her new journey. Thanks Irene from all your friends at the Red House.

# GALLERY **M** shop & exhibition **SALES**

Listed below are all those who have sold work during **January 2012**. Payments will be available before the end of January - please allow time for processing.

Any payments under \$20 will be paid in cash; (unless you have nominated Electronic Funds Transfer). All other payments will be made by cheque; remember that if you have not given your bank details for EFT, 45c will be deducted from any cheque payment.

If you have an (E) next to your name, your payment will be transferred to your bank account. Your statement of sales will be included in the next mail-out, or you can collect it when you next visit the gallery.

Adams, Billie (E)	Lorenzen, Hans
Bach, Nina (E)	Martin, Beryl (E)
Bader, Gerda (E)	Mathie, Kay (E)
Blake, Helen (E)	McCallum, Val (E)
Blanch, Denise (E)	McCaul, Margaret (E)
Boot, Jeremy (E)	McNicol, Erica (E)
Bradshaw, Diana (E)	Neutze, Nicola (E)
Bruss, Darien (E)	Nooteboom, Michele(E)
Button, Emily (E)	Olijnyk, Leonid (E)
Carrapiett, Gem (E)	Paddick, Jeremy (E)
Carter, Lesley (E)	Pritchard, Julie (E)
Choppity & Smem (E)	Puschart, Eileen
City of Marion(GST)	Ralph, Marie Claire (E)
Couper,Anna (E)	Richards, Claire (E)
Davis-Quantrill, Audrey	Sage, Mel (E)
Double, Sue (E)	Sharp, Andrea L (E)
DuMont, Sandra (E)	Sheridan, Marie (E)
Forbes, Noelene (E)	Shinkfield, Pauline
Gates, Gillian (E)	Skillitzi, Stephen (E)
Glowacki, Mark (E)	Slope-Phillips, Margaret (E)
Gyapjas, Stephanie	Smith, Anthea (E)
Hamilton, John (E)	Starr, Sharon
Hanka, Margo (E)	Stefanski,Tamra
Holmes, Althea (E)	Suneden School (GST) (E)
Horsfall, Anthony	Tan, Jin Baio (E)
Hoyle, Cleone, J (E)	Thompson, Anne
Jackson, E.	Wakefield, Julia (E)
James, Eleanor	Walford, Angela (GST) (E)
Jordan, Valerie (E)	Weightman, Pheobe (E)
Julian, Beatrice	Wilson, Phyllis
Kelly, Kate (E)	Yates, Elizabeth (E)
Laishley, Claire (E)	Young, Sally (E)
Lim, Marianne &Toh, Dylan (E)	Zabrowarny, Lorraine (E)

## art'n'about

**Kay Cunningham** is exhibiting at Flinders Medical Centre Community Gallery from 29 February - 3 April. The show will be in two areas - one showing landscapes, and the other celebrating the rise of the sporting emus.

**'Splash'** is the new exhibition at the Stationmasters Gallery, 20 South Terrace, Strathalbyn. On display until 19 February. 10am-4pm Wed-Sun. P: 8536 4263

**'Tutors on Show'** on at the RSASA Gallery until Sun 12 February. Tutors / Artists: Bev Bills, David Braun, Roe Gartelmann, Bob Landt, Trevor Newman, Alan Ramachandran, Gerhard ritter & Margaret Tuckey. Upstairs, Level 1, Institute Building, cnr Nth Tce & Kintore Ave, Adelaide. Mon - Fri 10.30am-4.30pm; Sat & Sun: 1-4pm. P: 8232 0450

**SPLASHOUT STUDIOS ART** Classes, workshops, products, exhibitions. NEW: Art trips and Art History film sessions. Open February for another great year of 'all things art'. P: 8296 3859 [www.splashoutstudios.com](http://www.splashoutstudios.com)

**ADELAIDE FRINGE 2012** - 24 February - 18 March. Look for the guide to find 900 events in 300 venues all over Adelaide. Fringe Parade through the centre of the city, down King William St, 8pm Fri 24 February.

## diary dates

### Sunday 5 February

Close of current exhibitions

### Friday 10 February: 5 - 8pm - EXHIBITION OPENINGS

▶ *'Hololujah & other holograms'*  
holograms and paintings by David Warren

▶ *'Raw'*  
paintings by Denva Whiting

### Monday 13 February: 4pm

Exhibition Committee meeting

### Thursday 16 February: 7pm

Red House Group Inc Board of Management Meeting

### Monday 20 February

Last day - Return of entry forms for RHG member exhibition *'Nourish'*

## opportunities

### Marion Council Chambers Gallery Space

The City of Marion has the Chambers Gallery available for exhibition of works from community groups, emerging or professional artists.

The space is free, however user groups are required to have \$10m public liability insurance cover or can be covered under Council's policy for a small fee. The program for 2012 has many spaces available at this stage. To organise an exhibition or view the gallery please contact the Arts & Cultural Development Officer on 8375 6891 or [vac@marion.sa.gov.au](mailto:vac@marion.sa.gov.au)

### New singing training group

The Adelaide Allsorts Harmony Chorus needs male singers. Learn how to sing in 4 parts - Marion Uniting Church 6.15 - 7.15pm Friday evenings at Marion Uniting Church, cnr Township Road & Church Crescent, Marion. Call Sarah on 0434 930 626 for more info.

### 2012 Rotary Art Exhibition: 19 - 24 May

Entries are now being accepted for this exhibition, to be held in the Clare Town Hall. This is the fifteenth exhibition, and follows the success of last year when 65 paintings were sold. Return Entry Forms by Friday 20 April - register early as there is a limit of 550 entries, the capacity of the town hall. Prize money totals \$14,800, across various categories. Free pickup & return from Marion.

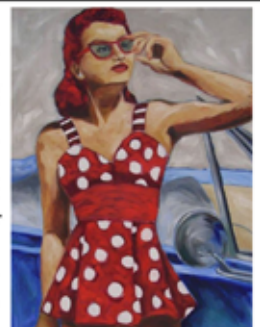
Forms are from [zwecklm@bigpond.com](mailto:zwecklm@bigpond.com)

call 0419 892 149, or download from [www.clarerotary.org.au](http://www.clarerotary.org.au)

## ART CLASSES

Ravine Street - Marino

Phone: 08 8296 3859  
Email: [splashout@ozemail.com.au](mailto:splashout@ozemail.com.au)  
Web: [www.splashoutstudios.com](http://www.splashoutstudios.com)



Splashout  
Splashout Studios Art