



The Other Place

An exhibition of surrealist artworks by **Matt Sheehy**

Matt Sheehy is a Mount Gambier based artist, who has been painting for about 20 years. He studied at O'Halloran Hill TAFE, but considers himself to be predominantly self-taught.

Matt describes his work as exploring possibilities outside the mainstream consensus reality, concepts that would usually be classed as paranormal or esoteric.

Matt defines his work as surreal, because he feels that is a large enough umbrella to fit it under, but he says he doesn't really think about style when he is working. "It's just about getting the ideas out" Matt says.

Some of Matt's work is emotionally based, expressing a feeling, through abstraction. Others are the type of image that may generate certain emotion. Other artworks are based on ideas that Matt finds interesting, sometimes being inspired by books, movies and video games.



"I'm interested in alternative theories of consciousness and the universe like pantheism and panpsychism - the concept that reality is subjective and the universe as a conscious entity" Matt says. "I like to explore themes that straddle both science and spirituality, and where they might unify in a new understanding of

reality; and how ancient mythology and folklore mirror modern paranormal phenomena".

Matt works mostly in oils and occasionally in acrylics, and is inspired by many influences, but notes his main ones as Chagall, H.R. Giger and Dali.

"At the end of the day, it's just my way of seeing the world" Matt says, "looking at ourselves from an unconventional, and, hopefully, previously unexplored point of view".



Meet the Artist

Matt Sheehy will be in Gallery M from 2pm on Sunday 30 October, providing an opportunity to chat with him in an informal atmosphere. All welcome, free entry.

Images by Matt Sheehy
(above) Alien Landscape; (left) Realm of the Longwalker

'The Other Place'
will be officially launched by
Anthony Peluso
Director Community Engagement
Country Arts SA
6pm, Friday 28 October
Free entry, all welcome



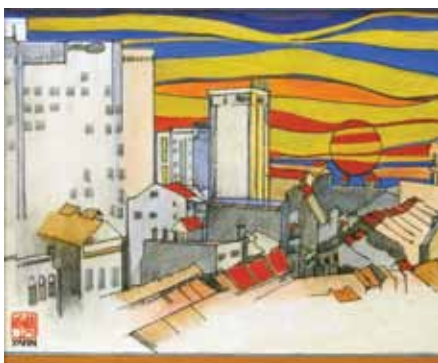
Drawing Conclusions too

An exhibition featuring drawings in various media by members of **Red House Group Inc**

As the Red House Group moves 18th year, the challenge continues for members to extend themselves to produce artwork of a consistently high quality in a range of media.

'Drawing Conclusion too' showcases the work of approximately 60 members, who choose to work in a wide variety of styles. But for this exhibition, each artwork is a drawing.

The big question is - how do you define 'a drawing'?



"Drawing is an enormously wide-ranging, infinitely varying and subtle activity; it may be looked on as a graphic script of endless individual permutation... a miraculous equivalent of the spoken and written word. It is one of the most potent, intuitive and yet highly evolved weapons that can be used to comprehend the unknown."¹

A similar exhibition featuring drawings, 'Drawing Conclusions', was held in Gallery M in 2006 with great success. Once again Red House artists have responded to this challenge with an eclectic mix of work, both traditional and contemporary.

Familiar media, such as pen and ink, charcoal, pastel and mixed media are well represented, but there are other imaginative responses.

Images (left) Jennie Yann Goh & (above) Ros McDougall



Some of the drawings in this exhibition have been etched on glass, stitched on paper and textiles, put onto handmade paper, woven into baskets, decorated porcelain and formed into a 3D sculpture, using wire.

Nearly 1100 artists have joined the Red House Group since 1994, so there is a wealth of skills and experience amongst those involved. New members are always welcome.

¹ James Gleeson, 'The draughtsman as artist', *The Drawings of William Dobell in the Australian National Gallery*, Canberra: Australian National Gallery, 1992, p 6.

'Drawing Conclusions too'
will be officially launched
by visual artist **David Taylor**
6:30pm, Friday 28 October
Free entry, all welcome

GALLERY **M**diary

23 October

CLOSE OF CURRENT EXHIBITION

28 October - 18 November

TWO EXHIBITIONS

- ▶ *'The Other Place'*
Abstract and surreal artworks by **Matt Sheehy**
- ▶ *'Drawing Conclusions too'*
Drawn artworks in various media by members of the **Red House Group Inc**

MEET THE ARTIST

2pm, Sunday 30th October

A chance to talk to Matt Sheehy in a relaxed and informal atmosphere

Free entry, all welcome

27 November - 6 Jan 2012

WHOLE GALLERY EXHIBITION

- ▶ *'10th Annual City of Marion Community Art exhibition'*
All residents of the City of Marion area are invited to exhibit their artwork.
No fee to enter. Download an entry form at www.gallerym.net.au or call on 8377 2904

13 January - 5 February

TWO EXHIBITIONS

- ▶ *'Shaped Colour'*
artworks in various media by **Margo Hanka**
- ▶ *'Transient Light'*
landscape photography by **Marianne Lim & Dylan Toh**

talking shop

(right)
Copper raku
sculptural bottles
(not waterproof, display only)
small **\$20.50**
large **\$30**



ALL FIRED UP

handmade ceramics
by
Angela Walford



(left)
black & white raku
sculptural bottles
(not waterproof, display only)
\$32 each

(right)
aqua teacups
\$20.50 each



(left)
Lil' Birdie Plates
medium **\$23**
large **\$32**



Help to celebrate the Marion Cultural Centre's 10th birthday **25, 26 & 27 November**.
Heaps of **FREE** entertainment and activities for the whole family.

For full details get your copy of the 10th Anniversary brochure from the Marion Cultural Centre, or visit the website: www.marionculturalcentre.com.au



Gallery M is proudly operated by the Red House Group Inc. on behalf of the City of Marion.
A City of Marion Cultural Development Project.



Gallery Hours: Mon to Fri 10am - 4pm, Sat 12 - 4pm, Sun 1 - 4pm. Closed Public Holidays