



Hmmm....

an exhibition of artwork in various media by members of the **Red House Group Inc.**

This new exhibition features artwork by members of the Red House Group Inc, a not for profit artist managed organisation that began in 1994. The Red House Group manages Gallery M on behalf of the City of Marion.



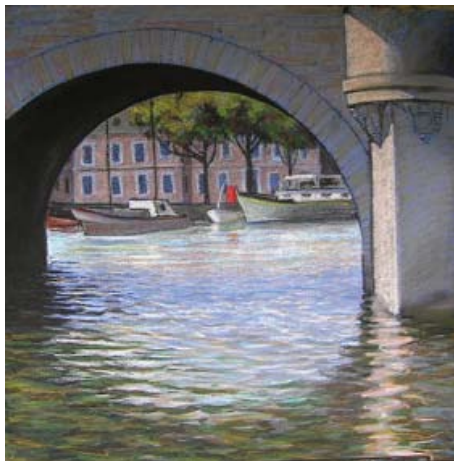
glass sushi dish set by Kaare Nygaard

Approximately 90 artists are displaying their work in this whole gallery exhibition, in a variety of media.

As well as paintings, drawings and photography, there will be an array of 3D artworks including glass, ceramics, timber and textiles.

Sarah Bradley is showing a paper collage. Denise Blanch has created a 3D painting of a Rosella, using a unique paint that can be displayed on windows.

New Red House Group member Bronwyn gell is displaying a mosaic pot; another new member, Lisa Howe has made a free standing leadlight sculpture on a slate base.



painting by Cathi Steer

Makram Iskandar has made a terracotta sculpture (*illustrated*) with intricate patterning and iron coloured glaze.

Long time Red House member Geoffrey Herbert, who always makes interesting artwork, has created a free standing indoor/outdoor cement sculpture with an Aboriginal theme.

Timber work includes a beautifully crafted box by Anthony Horsfall and a wooden box by Willem Kurvits. Mike O' Donoghue has made a turned timber sculpture.

Jewellery is also featured, with Japanese artist Hisako Kokubun displaying her hand crafted beaded jewellery with an Asian influence; Anthea Smith has also made hand crafted jewellery.

Ceramicist Anna Couper has made a ceramic torso on a stand; Barbara Davis has made a glass sculpture created using Bulls Eye art glass imported from America.



terracotta sculpture by Makram Iskandar

Kaare Nygaard has created a stunning hexagonal set of sushi dishes in fused red and blue glass, complete with a clear glass tray (*illustrated*). Stephen Skillitzi has also made one of his wonderful glass sculptures. Bev Whittington has created pottery pieces.

Well known porcelain artists Lee Sanders & Marie Sheridan once again are showing their beautifully decorated onglaze porcelain.

Textile work includes a hand knitted wrap by Loris Abercrombie, and a brilliant coloured felt vessel by Jan Edwards. Liz Yates has made a natural fibre basketry item.

Photographers include Jane Kennedy, Noel Maddock, Kerry Malec, Leonid



glass sculpture by Barbara Davis

'Hmmm....' will be officially launched by **David Barrett**
Co-ordinator, Marion Cultural Centre
6.30pm, Friday 11 March

Olijnyk, Don Oswald, Janine Paris, and sisters Deborah & Laura Bell.

Of course, there is a wide range of 2D paintings and drawings, including work by many well known artists.



photography (film) by Janine Paris



painting by Aboriginal artist Mary-Ann Ross

GALLERY **M**diary

6 March

CLOSE OF CURRENT EXHIBITION

11 March - 3 April

WHOLE GALLERY EXHIBITION

- ▶ *'Hmmm...'*
Artwork in various media by members of the **Red House Group Inc.**

PLEASE NOTE:

*Gallery M will be closed for the Adelaide Cup Day public holiday **Monday 14 March***

8 April - 8 May

WHOLE GALLERY EXHIBITION

- ▶ *'Journey'*
Paintings and pottery by **Bill McSwain**

13 May - 5 June

TWO EXHIBITIONS

- ▶ *'Divergent Perspectives'*
Textile artworks by the **Wild Fibre Artists**
- ▶ *'The Closed Schools of Marion'*
Photographs & artefacts from the 'Baby Boomer' schools (now gone) that once existed in the City of Marion area. In conjunction with the **Marion Historical Society**

10 June - 3 July

WHOLE GALLERY EXHIBITION

- ▶ Paintings and hand painted porcelain by the **Australasian Porcelain Art Teachers SA Inc.**

8 - 31 July

THREE EXHIBITIONS

- ▶ Paintings and drawings by members of the **Marion Art Group**
- ▶ *'On Vessels'*
Prints and drawings, boat travel inspired, by **Glenda Bowen**
- ▶ *'With Vessels'*
Classic and contemporary 3D vessels and sculptures by **Studio Potters SA Inc.**

Gallery M is now accepting Exhibition Proposals for 2012. Contact Gallery M for details, or go to www.gallerym.net.au

talking shop



(left)
greeting cards
(blank inside - many designs)

\$4.50 each



(right)
gift cards

\$1 each

what's new pussycat?

gift products featuring artwork by **Margaret Slape-Phillips**



(left)
various
book marks
\$2.50 each

(below)
note pad
(many designs available)
\$4 each



(below)
jigsaw puzzles
(large size)
\$35 each

