



CATWALK

funky felines, femme fatales and fashion fantastique by **Helena Nikitins**

Helena Nikitins has combined two of her great passions – fashion and felines in this amazingly colourful original exhibition.



Most of the exhibits are paintings on silk as well as pastels and some mixed media. There are frisky, funky and fabulous felines, realistic and stylized. The fashion related paintings celebrate the elegance and beauty of the feminine spirit, inspired by Erté and Klimt. Also featured are hand-painted jackets and silk scarves.

The fashion designs fall well short of Haute Couture, as they are primarily intended for Helena herself, a lady of mature years and an ordinary lifestyle. Fortunately she is an eccentric, convinced she was a Christmas tree in a previous life. Her creations are both original and flamboyant. The outfits focus on Melbourne Cup, leopard prints and fashion for special occasions.

Helena's aim for 'Catwalk' was to challenge herself as an artist, which she feels she has achieved to some degree. It is the first time she has painted 'ladies' with silk dyes – and only started using pastels twelve months ago, a medium she has embraced with the future in mind.

The opening will be a 'happening', featuring a small scale fashion parade and performance of a couple of Helena's illustrated cat poems.



This exhibition mirrors Helena's simplistic philosophy of art. She likes art to reflect the more positive, aesthetic aspects of life, to be uplifting or entertaining, rather than merely provocative or disturbing. Her motto is – focus on flowers not sewers. A blatant romantic, in this case she has concentrated on beautiful fashionistas and felines.

'Catwalk' will be officially opened by Rainer Jozeps, Chief Executive, Adelaide Symphony Orchestra, at 7pm Friday 10 October.

AWAKEN

artworks in various media by members of the **Red House Group**

Once again the Red House Group is displaying a broad selection of artwork in diverse media

The title 'Awaken' has evoked a range of responses, from the topical issues of climate change and the plight of the earth, to more literal translations.

Work includes paintings, photography, print making, drawing, textiles, ceramics, basketry, porcelain (on glaze) and sculptures in various media.

Since the Red House Group originated in 1994, nearly 1,000 artists have joined the group, with membership each year remaining at approximately 250-300 artists.

The Red House Group is a non profit, artist managed organisation that acts for a focus for art and cultural activities for all individuals and groups in the City of Marion council area and surrounding region



Many members have maintained their involvement since those early years, and as well as participating in group exhibitions they provide essential volunteer support for the operations of Gallery M.

When the Marion Cultural Centre opened in 2001, the Red House Group were given the opportunity to manage Gallery M on behalf of the City of Marion.

This relationship has proved very successful, and



150 separate exhibitions will have been shown by the time the MCC celebrates its 7th anniversary in November.

The Red House Group gives all artists the chance to meet and network with their peers, and many members have made important professional and social connections through their involvement. Annual membership is just \$25 or \$15 concession. Contact Gallery M staff for more information.

'Awaken' will be officially launched by Marg Edgecombe, Team Leader, Arts & Cultural Development, City of Marion at 6.30pm, Friday 10 October.

Red House Group images:
(left) 'Dawn' digital image by Jeremy G Paddick
(centre) 'Off to the City' acrylic by John Hamilton
(above) 'Climate Change' painting by Mary Smith

GALLERY **M**diary

5 October

CLOSE OF CURRENT EXHIBITIONS

10 October - 2 November

TWO EXHIBITIONS

- ▶ 'Catwalk'
Mixed media by **Helena Nikitins**
- ▶ 'Awaken'
Artwork in all media by members of **The Red House Group**

2pm Sunday 19 October

MEET THE ARTIST

A chance to meet and talk to **Helena Nikitins** in a relaxed and informal atmosphere

PLEASE NOTE:

Gallery M is closed Monday 6 October
(Labor Day public holiday)

7 November - 30 November

WHOLE GALLERY EXHIBITION

- ▶ Paintings, sculpture and mixed media by Greek and Australian artists associated with the **Panicarian Brotherhood of Australia Inc**

7 December- 10 January '09

WHOLE GALLERY EXHIBITION

- ▶ '7th Annual City of Marion Community Exhibition'
All residents of the Marion Council area are invited to exhibit their artwork. No fee to enter, contact Gallery M for more information or an entry form, or go to www.gallerym.net.au

23 January - 15 February

WHOLE GALLERY EXHIBITION

- ▶ Contemporary ceramics, jewellery, painting, photography, printmaking and video installation by graduating students from the **Vizarts Program, TAFE SA O'Halloran Hill Campus.**

Limited exhibition opportunities exist for 2009, and proposals are being accepted for 2010. Don't miss out!! -

Exhibition information can be found at www.gallerym.net.au

talking shop

(right)
Leafy Breeze earrings
\$60



(below)
Tatami earrings
(using reticulation)
\$75



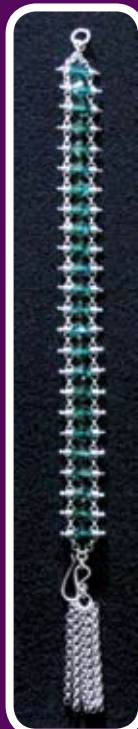
(above)
pomegranite ring
\$115

spring bling

Handcrafted
sterling silver creations by
Eleanor James



(above)
silver frost earrings with satin frost
hoops, and natural crystals
\$85



(left)
Emerald & Swarovski crystal bracelet
\$120



(right)
amethyst bracelet
\$148