

Ha-ji-me-ma-shi-te

contemporary photography by **Janine Paris**

The exhibition title 'Hajimemashite' is a Japanese expression literally meaning "I am meeting you for the first time". It is used as a greeting when you are introduced to someone for the first time. This is Janine's first solo exhibition, so through her work, she is meeting you for the first time.

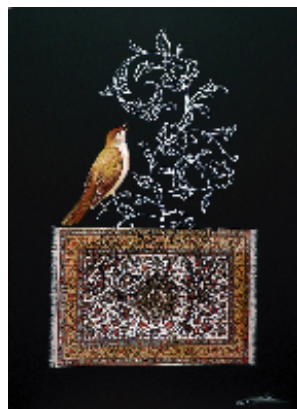
The exhibition features a selection of photographic images of nature and landscapes, in Black and White and Colour; presented in the contemporary format of limited edition Giclee prints on canvas. The images were shot on film using a Canon EOS 500 SLR camera.

Janine's images, through thoughtful subject selection and composition, abstract the ordinary with stunning results. Textures, shape and form are enhanced through use of light and careful selection of paper. "Through my photography

I strive to capture the beauty and diversity of Australia's nature and landscapes 'as it is' without digital manipulation", Janine says.

These images represent a range of subjects and locales; rural, coastal & dune, river & woodland. All were photographed in Australia (South Australian regions and Fraser Island) with the exception of "Kirstenbosch Aloe" which was photographed in Cape Town, South Africa. This image is included in the exhibition because it complements the Australian images so well.

'Hajimemashite' will be officially opened by award winning photographer and lecturer Ken Binns at 6.30pm, Friday 18 January.



Feathered Friends

paintings featuring birds by **Shahin Azadegan**

Shahin was born in Iran, and her background includes studies in architecture, many years experiencing the style of traditional Persian miniatures, and the study of carpet design and decoration in Tehran. She migrated to Australia eight years ago, and has continued her studies gaining a BA (Visual Arts) at O'Halloran Hill TAFE.

This exhibition features birds painted in 'miniature' style, incorporated with Persian calligraphy to elaborate their meaning.

Shahin observes how birds reside harmlessly among humanity, and notes their utterances may often be heard with melodies so pleasing that parts of Persian music have been tuned to their chords.

"Birds are of different forms and each belongs to its own area of land" Shahin says. "Their migration symbolises the life of myself and others in similar situations who have flown to this land and begun new lives."

The poetic works of 'Rumi' have been recorded in some of the paintings, with the birds becoming, in effect, the speakers of the words. Other paintings feature contemporary work from Sepehri, Shamlo and Moshiri; traditional poets like Hakim Omar Khayam; or even works of greater men like Baha'u'llah, being the Messenger of Peace to the world of man. Translations will be on display.

'Feathered Friends' will be officially opened by Maureen Prichard, TAFE Principal Lecturer in Visual Art, at 6.45pm, Friday 18 January.

Space, Sea and Fantasy

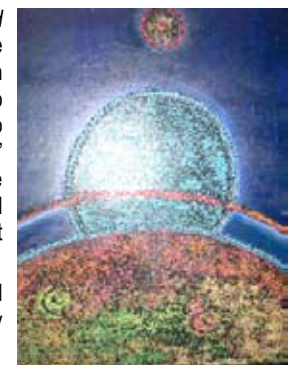
mixed media artworks by **Paula Kerr**

This exhibition of paintings evolved during an extremely challenging period in Paula Kerr's life. She was diagnosed with cancer just before Christmas 2006, and it was during her recovery that she began to work with beads, incorporating them into her paintings.

Paula likes to hunt around the house and find articles that can be transformed and used in her paintings; and this collection includes old belt buckles, earrings, metallic pieces from old chimes, pieces of leather, and shells from the beach that have been sitting on her window sill for many years. She describes her work as being of an expressionism style.

The theme of the exhibition 'Space, Sea and Fantasy' represents Paula's yearning to escape from her world of pain, and the paintings each reflect one of the three themes. "I wanted to reach out to the night skies and travel away to the farthest planets, Saturn, Neptune, Jupiter" Paula says. "I wanted to swim out into the ocean and feel the waves wash over me; and at night I dreamed of a better place to be". Art was her escape.

This vibrant exhibition will be officially opened by Paula's husband David Kerr at 7pm, Friday 18 January.



Afghanistan in Transition

mixed media, photography & artefacts by **Susan Hayfa**

Susan visited Afghanistan in 2006, and found it to be a fascinating and contradictory place where aspects of innocent beauty and serenity meet aspects of terror and destruction. Although this exhibition is not meant to be political, it does consist of images of war, poverty and intolerance. It is also a celebration of the beauty and romance found in areas such as Kabul, Bamian and Kunduz.

The exhibition features digital images, photographic collage, and elements of material culture including clothing, diary excerpts, and assorted war related

items. These items help to create a stronger connection between the viewer and the exhibition subject.

Susan believes this collection is a strong reminder of the damage that was done in Afghanistan; and an opportunity for people to learn more about the area and see images, people and places they might never have seen before.

"Every single image tells a story – one of enduring hope and freedom" Susan says. "The exhibition helps to create a more complete picture of a place, its people, and the interaction between the two."

Susan has studied Archaeology and has a Bachelor degree from Flinders University. She has travelled extensively and lived in many different countries due to her mother's occupation as a diplomat. The exhibition will be officially opened by her mother Gisela Hayfa at 7.15pm, Friday 18 January.

13 January

CLOSE OF CURRENT EXHIBITION

18 January - 17 February

FOUR EXHIBITIONS

- ▶ *"Feathered Friends"*
Paintings featuring birds by **Shahin Azadegan**
- ▶ *"Space, Sea & Fantasy"*
Mixed media artworks by **Paula Kerr**
- ▶ *"Afghanistan in Transition"*
photography and mixed media by **Susan Hayfa**
- ▶ *"Ha-ji-me-ma-shi-te"*
Contemporary photography featuring nature and landscapes by **Janine Paris**

ARTIST TALKS

A chance to meet and talk to the artists in a relaxed and informal atmosphere

Sunday 27 January: 2pm

- ▶ Shahin Azadegan
- ▶ Paula Kerr

Saturday 2 February: 2pm

- ▶ Susan Hayfa

Sunday 3 February: 2pm

- ▶ Janine Paris

22 February - 18 March

WHOLE GALLERY EXHIBITION

- ▶ *"4 sight"*
Paintings, sculpture and photography by **Eddie Knuepfer, Ron Orchard, Mary Cartwright and Qi Zhao**

Note - Gallery M is closed for Easter Friday 21 - Monday 24 March

28 March - 20 April

WHOLE GALLERY EXHIBITION

- ▶ *"Mutli-Dimensional Journey"*
Paintings by **Cathi Steer**, and paintings, ceramics and masques by **Maré Puksand**

27 April - 15 May

TWO EXHIBITIONS

- ▶ Artwork by members of the **Red House Group**
- ▶ *(to be confirmed)*

talking shop

naturally inspired creations
by
Katie Keast

spoil yourself



(above)
acid etched metal & dyed shell necklace

\$190



(right)
treated copper and glass bead necklace

\$125



(left)
antique mother of pearl and fine silver necklace & earring set

\$215



(right)
glass bead and fawn shell necklace

\$60

Limited stocks are still available Please support Gallery M with this major fundraiser.

Each month can be displayed as required, with additional artwork and space for notes on the reverse of each page.

Each calendar comes complete in its own CD-sized display box.



HALF PRICE - now just \$5 each